

Flow cells and sensors for Free/Combined chlorine and D.Ozone

This series of sensors with flowcells is for measuring free chlorine, combined chlorine and dissolved ozone.

The sensors are polarographic with membrane, and provide a signal proportionate to the content in the liquid. All models come with a built-in Pt100 for temperature.

The measurement of chlorine/ozone does not alter the sample because there is no addition of chemicals to the water flow.

The model CL 7901 is ideal for drinking water plants, cooling towers, reverse osmosis, dechlorination and activated carbon.

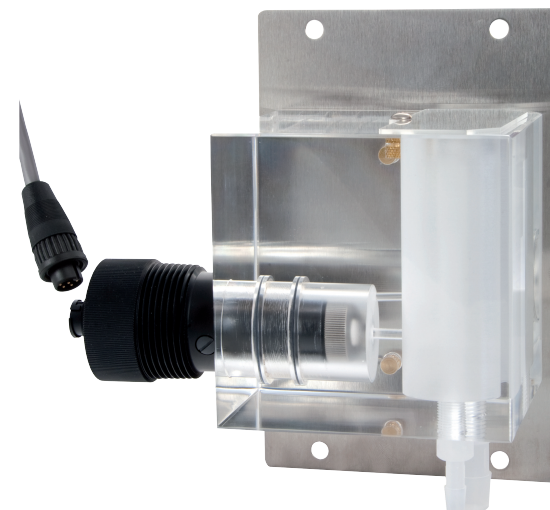
The model CL 7902 is recommended for combined chlorine in swimming pools, and in water treatments plants where there are chloramines.

Finally, OZ 7901 is for drinking water, cooling towers, sterilization and activated carbon.

When installing these cells in the plant, it is recommended to leave enough room for operations, such as cleaning and replacing the sensor.

All models can be connected to CL 7685.010, CL 7685.001, CL 3630, CL 7635 or CL 7335.

CL 7902 requires the instruments to be set with -400 mV polarization.



CL 7901

For Free Chlorine measurement.

The package contains:

- **0012.000066** Free Chlorine sensor
- **0012.030029** a 7 m cable
- **0012.000043** flow cell
- **0012.090011** electrolyte 125 cc
- **0012.050005** kit of 10 membranes

CL 7902

For Combined Chlorine measurement.

The package contains:

- **0012.000066** Free Chlorine sensor
- **0012.030029** a 7 m cable
- **0012.000043** flow cell
- **0012.090010** electrolyte 125 cc
- **0012.050007** kit of 10 membranes

OZ 7901

For D.Ozone measurement.

The package contains:

- **0012.000042** D. Ozone sensor
- **0012.030029** a 7 m cable
- **0012.000043** flow cell
- **0012.090008** electrolyte 125 cc
- **0012.050002** kit of 10 membranes

Technical Specifications

Response time: 90% in 60 s

Temperature sensor: RTD Pt100 built-in

Temperature limits: 5/+55 °C

Material: Noryl and stainless steel

Type of cell: overflow system

Material: clear acrylic

Inlet: 25/110 litre/hour

Inlet fitting: 1/4"

Outlet fitting: 1/2"

Архангельск (8182)63-90-72
Астана +7(7172)727-132
Белгород (4722)40-23-64
Брянск (4832)59-03-52
Владивосток (423)249-28-31
Волгоград (844)278-03-48
Вологда (8172)26-41-59
Воронеж (473)204-51-73
Екатеринбург (343)384-55-89
Иваново (4932)77-34-06
Ижевск (3412)26-03-58
Казань (843)206-01-48

Калининград (4012)72-03-81
Калуга (4842)92-23-67
Кемерово (3842)65-04-62
Киров (8332)68-02-04
Краснодар (861)203-40-90
Красноярск (391)204-63-61
Курск (4712)77-13-04
Липецк (4742)52-20-81
Магнитогорск (3519)55-03-13
Москва (495)268-04-70
Мурманск (8152)59-64-93
Набережные Челны (8552)20-53-41

Нижний Новгород (831)429-08-12
Новокузнецк (3843)20-46-81
Новосибирск (383)227-86-73
Орел (4862)44-53-42
Оренбург (3532)37-68-04
Пенза (8412)22-31-16
Пермь (342)205-81-47
Ростов-на-Дону (863)308-18-15
Рязань (4912)46-61-64
Самара (846)206-03-16
Санкт-Петербург (812)309-46-40
Саратов (845)249-38-78

Смоленск (4812)29-41-54
Сочи (862)225-72-31
Ставрополь (8652)20-65-13
Тверь (4822)63-31-35
Томск (3822)98-41-53
Тула (4872)74-02-29
Тюмень (3452)66-21-18
Ульяновск (8422)24-23-59
Уфа (347)229-48-12
Челябинск (351)202-03-61
Череповец (8202)49-02-64
Ярославль (4852)69-52-93